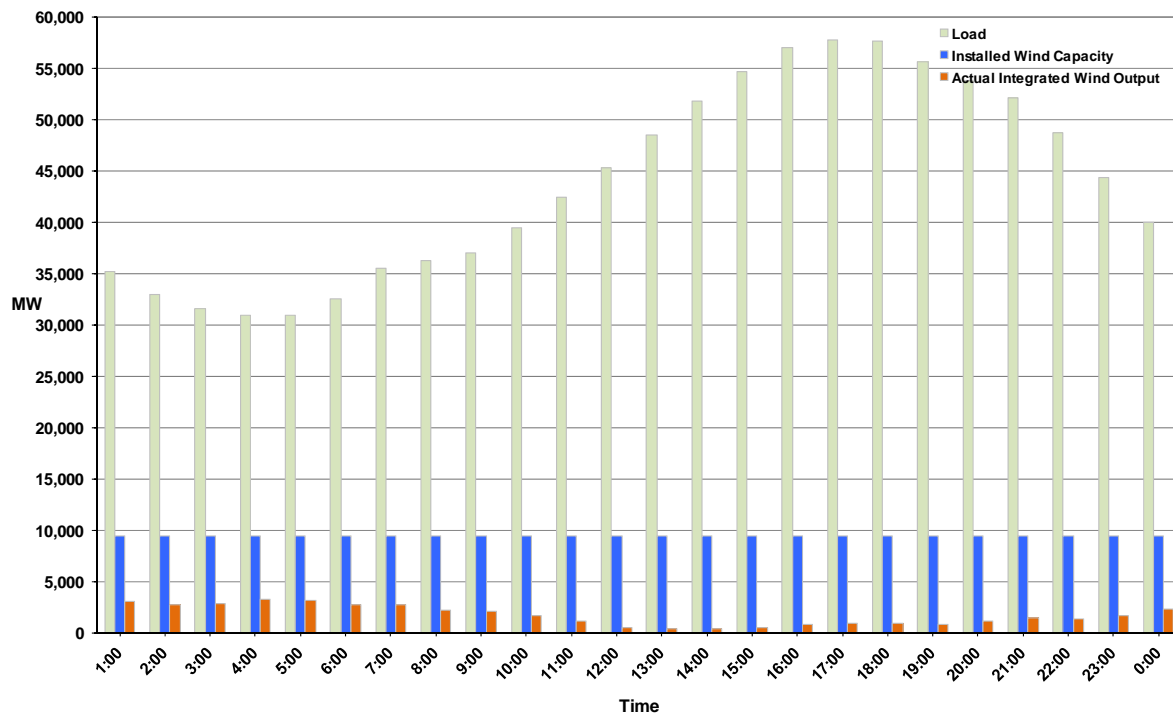




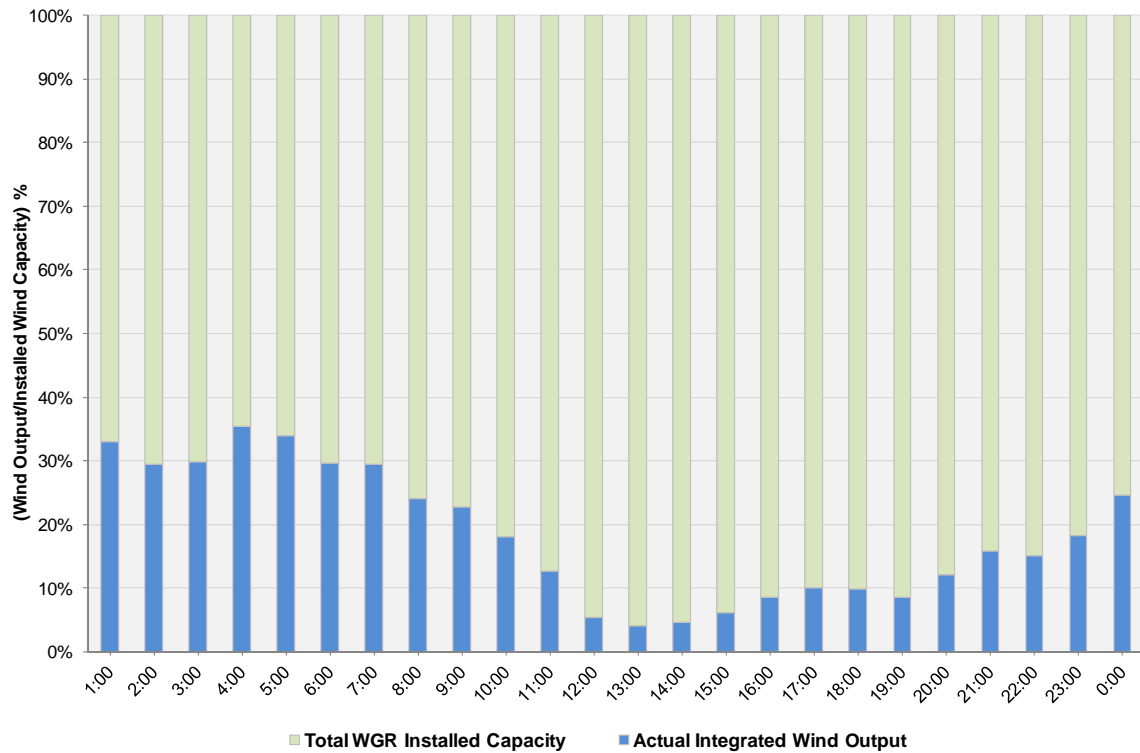
ERCOT Grid Operations Wind Integration Report: 09/25/11

| | |
|----------------------|-----------|
| Peak Load | 57,731 MW |
| Load Peak Hour | 17 |
| Wind over Peak | 949 MW |
| Wind Record 06/19/11 | 7,355 MW |
| Max Wind Value | 3,591 MW |
| Wind Peak Time | 04:06:32 |
| Wind Integration % | 11.61% |

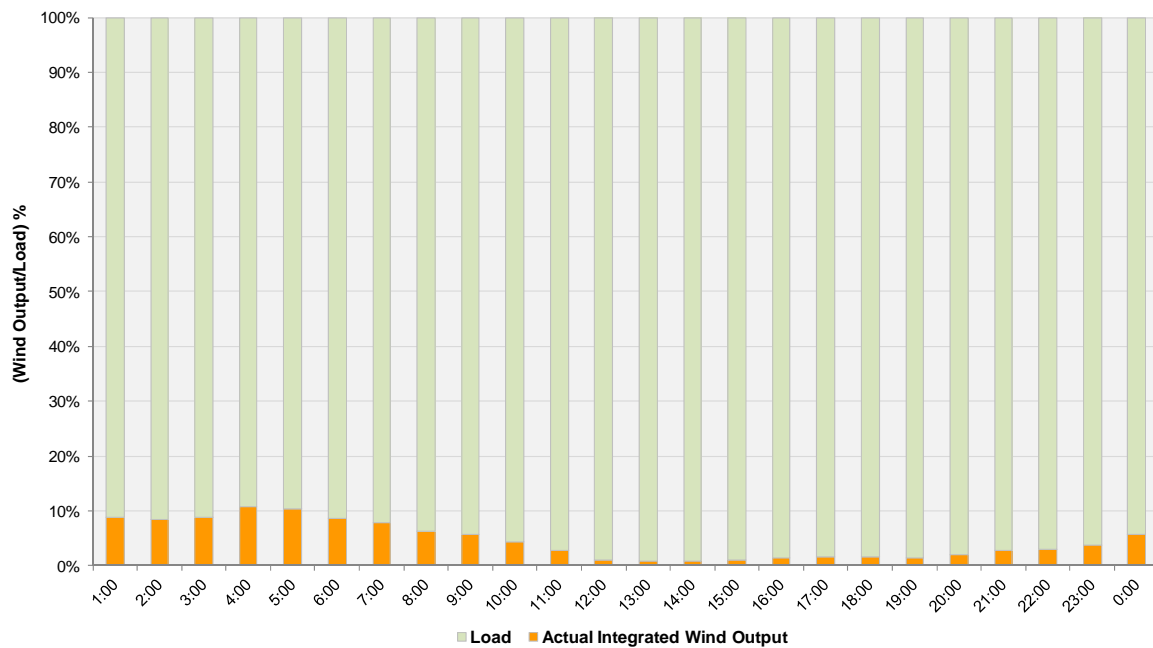
**Hourly Average Actual Load vs. Actual Wind Output
09-26-2011**



Actual Wind Output as a Percentage of the Total Installed Wind Capacity
09-26-2011



Actual Wind Output as a Percentage of the ERCOT Load
09-26-2011



ERCOT Load vs. Actual Wind Output 9/19/2011 - 9/26/2011

